


## Human IL-2 protein

Cat #: PRP1025

Size: 10 µg/50 µg/100 µg/1 mg

### Product Information

	<b>Product Name:</b> Human IL-2 protein		
<b>REF</b>	<b>Catalog Number:</b> PRP1025	<b>LOT</b>	<b>Lot Number:</b> Refer to product label
	<b>Purity:</b> >98 % as determined by SDS-PAGE		
	<b>Storage:</b> Store at -20°C		<b>Preparation method:</b> <i>E.coli</i>
	<b>Shipping:</b> The product is shipped at ambient temperature.		

**Background:** Interleukin (IL-2) abbreviated as interleukin, refers to a lymphokine that interacts between leukocytes or immune cells, and it belongs to the same cytokine as blood cell growth factor. The two coordinate and interact with each other to complete hematopoietic and immune regulation functions together. Interleukins play an important role in transmitting information, activating and regulating immune cells, mediating the activation, proliferation and differentiation of T and B cells, and in inflammation.

**Sequence:** Amino acid sequence derived from Human IL-2 is form (P60568-1) (Ala21-Thr153) was expressed.

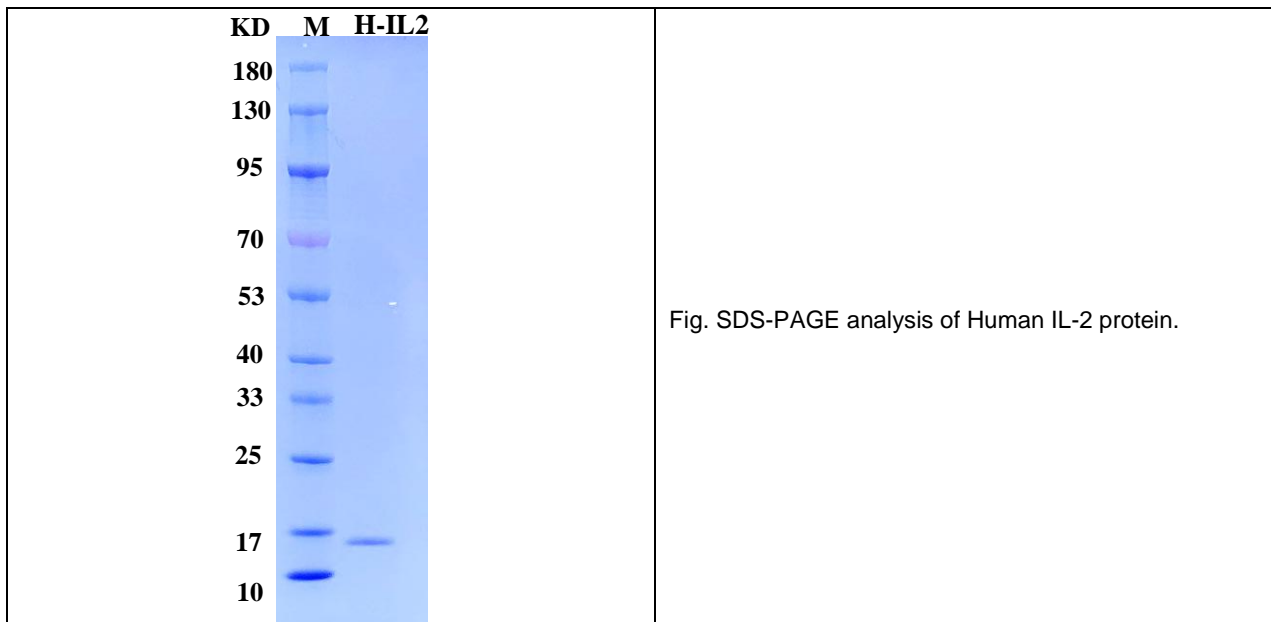
**Protein length:** The recombinant Human IL-2 consists of 134 amino acids (N-Met) and has a predicted molecular mass of 15.5 kD.

**Endotoxin:** < 1.0 EU per µg of the protein as determined by the LAL method.

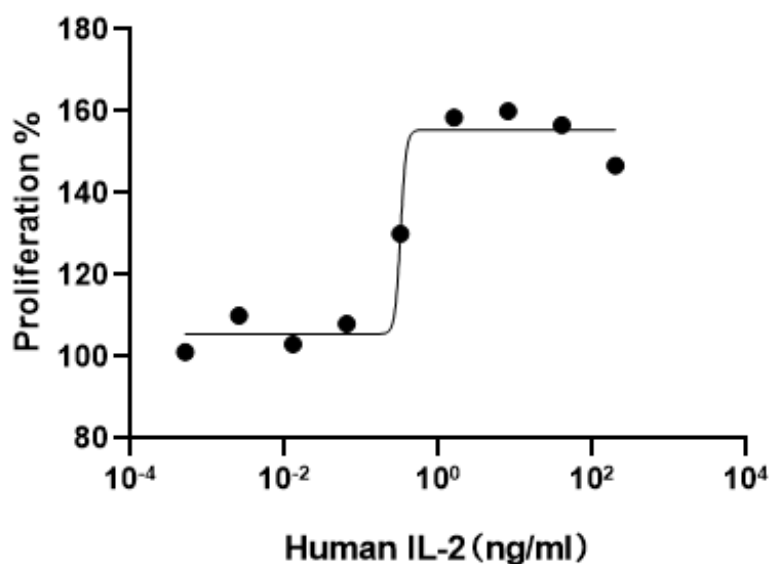
**Formulation:** Lyophilized from sterile 20 mM Tris, 150 mM NaCl pH 7.5.

**Storage Instructions:** The recombinant Human IL2 protein product should be stored below -20°C. The protein should be stored at 4°C between 2-7 days and for future use below -20°C. For long term storage it is recommended to add a carrier protein (0.1% HSA or BSA). Please prevent freeze-thaw cycles.

**Usage notes:** Always centrifuge tubes before opening. It is recommended to diluted the protein using the PBS buffer or Protein storage solution to working concentration.



**Biological Activity:** Measured by its ability to induce proliferation in CTLL-2 cells. The ED<sub>50</sub> for this effect is 0.3 ng/mL. The specific activity of recombinant Human IL2 is approximately  $>3.33 \times 10^6$  IU/mg.



**Note:** The product listed herein is for research use only and is not intended for use in human or clinical diagnosis. Suggested applications of our products are not recommendations to use our products in violation of any patent or as a license. We cannot be responsible for patent infringements or other violations that may occur with the use of this product.